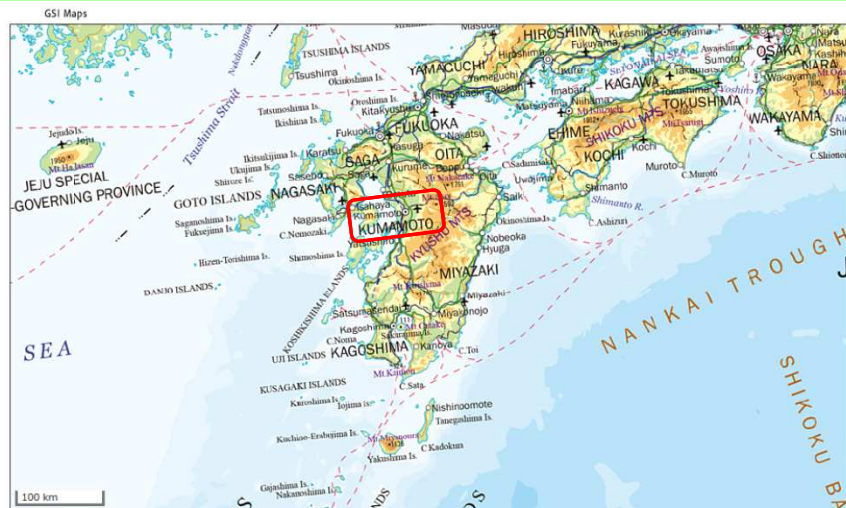


## The 6th UN-GGIM-AP Plenary Meeting

– Dates : 17<sup>th</sup>~19<sup>th</sup> October, 2017

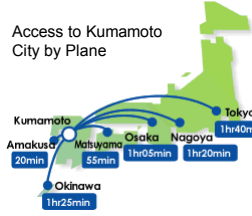
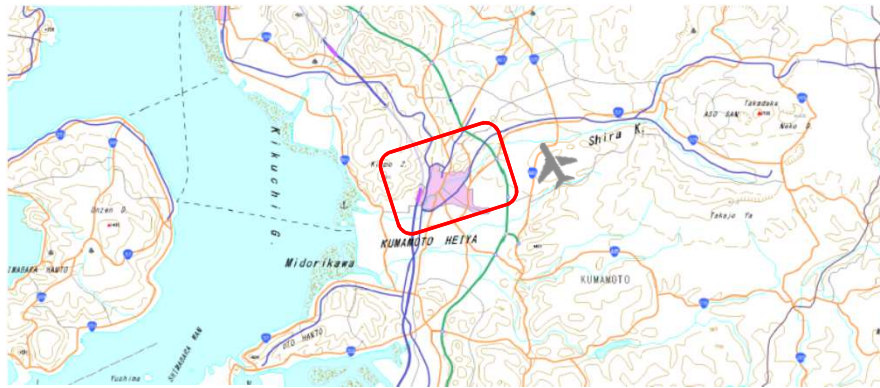
– Venue : Kumamoto City International Center,  
Kumamoto Prefecture, Japan

– Organizers : UN-GGIM-AP &  
Geospatial Information Authority  
of Japan(GSI)



## Location of Kumamoto City

3 



Access from the Aso Kumamoto Airport

Access to Kumamoto by Train (Kyushu Shinkansen, etc.)

Kyushu Shinkansen Line (Bullet Train)



## Venue : Kumamoto City International Center

4 

Located next to the Kumamoto Castle, Center of Kumamoto City



Kumamoto City International Center



Main Hall



International Conference Room

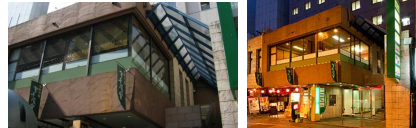
Hotel Nikko Kumamoto



KKR Hotel Kumamoto



Kumamoto Green Hotel



Dates : 17<sup>th</sup> – 19<sup>th</sup> October, 2017  
 Venue : Kumamoto City International Center

Day 1 <sup>st</sup> (October 17)	Day 2 <sup>nd</sup> (October 18)	Day 3 <sup>rd</sup> (October 19)
UN-GGIM-AP Plenary Session ~ Opening ~	<i>Special Session (cont'd)</i> ~ Case study on the Disaster Response for Kumomoto Earthquake in April 2016~	Technical & Site Visit (Tentative) ~ Kumamoto Castle ~ ~ Active Faults ~ ~ CORS station ~ ~ Mt. Aso Volcano ~
Lunch Time	Lunch Time	
WG Parallel Session ~ WG1 – WG4 ~  <i>Special Session</i> ~ Case study on the Disaster Response for Kumomoto Earthquake in April 2016~ "Geospatial Information for Disaster Response"	UN-GGIM-AP Plenary Session ~ Report from WG1 – WG4 ~ ~ Resolution ~ ~ Closing ~  Executive Board Meeting	
Welcome Reception		



Kumamoto "Hi no Kuni" "Mizu no Kuni"

7 

